

## Mandatory Disclosure

Mandatory Disclosure updated on August 2010

1. AICTE File No. **F.No.730-52-256(E)/ET/97**  
Date & Period of last approval **2008-2011**
2. Name of the Institution **Thiagarajar College of Engineering**  
Address of the Institution **Tiruparankundram**  
City & Pin Code **Madurai 625 015**  
State / UT **TamilNadu**  
Phone number with STD code **0452-2482240**  
FAX number with STD code **0452- 2483427**  
Office hours at the Institution **9.15am-5pm**  
Academic hours at the Institution **08.50am – 4.40pm**  
Email **tceoffice@tce.edu**  
Website **http://www.tce.edu**  
Nearest Railway Station (dist in Km) **Madurai (8Km)**  
Nearest Airport (dist in Km) **Madurai (8Km)**
3. Type of Institution Govt / **Govt.aided** / University Dept / Deemed Univ / Private-Self-Financed  
Category (1) of the Institution **Non Minority** / Minority specify minority :  
Category (2) of the Institution **Co-Ed** / Women only
4. Name of the organization running the Institution  
Type of the organization Society / **Trust** / PPP  
Address of the organization **Kalaithanthal Karumuttu Thiagaraja Charitable memorial trust  
Thiagarajar Mills premises  
Kappalur  
Madurai 625 008**  
  
Registered with Income Tax Department  
Registration date 2/9/1978  
Website of the organization **http://www.tce.edu**
5. Name of the affiliating University **Anna University Tirunelveli**  
Address **Government College Engineering Campus  
Tirunelveli 627 007**  
Website **http://www.annauniv.edu.in**  
Latest affiliation period : **2009-2010**

6. Name of the Principal / Director **Dr.V.Abhaikumar**

Exact Designation **Principal**

Phone number with STD code **0452 -2482430**

FAX number with STD code **0452-2483427**

Email **principal@tce.edu**

Highest Degree **Ph.D.**

Field of specialization **Microwave engineering**

7. Governing Board Members

Emeritus Chairman	Dr. (Mrs) Radha Thiagarajan Former Vice-Chancellor, Algappa University
Chairman & Correspondent	Mr. Karumuttu T. Kannan Former Chairman – CII southern Region Member – State Planning Commission Managing Director – Thiagarajar Mills Ltd.
Management Nominee	Dr. Venu Srinivasan, President – Confederation of India Industry Chairman and Managing Director, TVS Motor Company, Chennai
Management Nominee	Dr. R.Subbayyan, (Former Vice Chancellor, Bharathiar University) 27, Damu Nagar, Coimbatore 641 045.
Management Nominee	Dr. R. Natarajan, Former Chairman, All India Council for Technical Education, 52/1, 13 <sup>th</sup> Cross Street, Malleswaram, BANGALORE – 560 003.
Management Nominee	Dr. (Smt.). Uma Kannan, Secretary, Thiagarajar College, Madurai – 9
Nominee of Regional Committee (Ex-Officio)	Director & Regional Officer, All India Council for Technical Education, SRC, Shastri Bhavan, 26, Haddows Road, Chennai – 600 006

Nominee of All India Council for Technical Education	Dr. Krishna Mikkilineni, Managing Director, M/s. Honeywell India Software Operations (P) Ltd., Bangalore
Nominee of the State Govt. (Ex-officio)	Principal Secretary / Commissioner of Technical Education, Directorate of Technical Education, Chennai – 600 025.
Nominee of Commissioner of Technical Education	Mr. S. Annamalai, Director, Metal Powder Company Ltd., Kappalur, Thirumangalam (TK) Madurai DT
Nominee of Anna University	Dr. K. Rajagopal, Principal Govt. College of Engineering, Tirunelveli,
Ex-Officio Member Secretary	Principal, Thiagarajar College of Engineering, Madurai-15

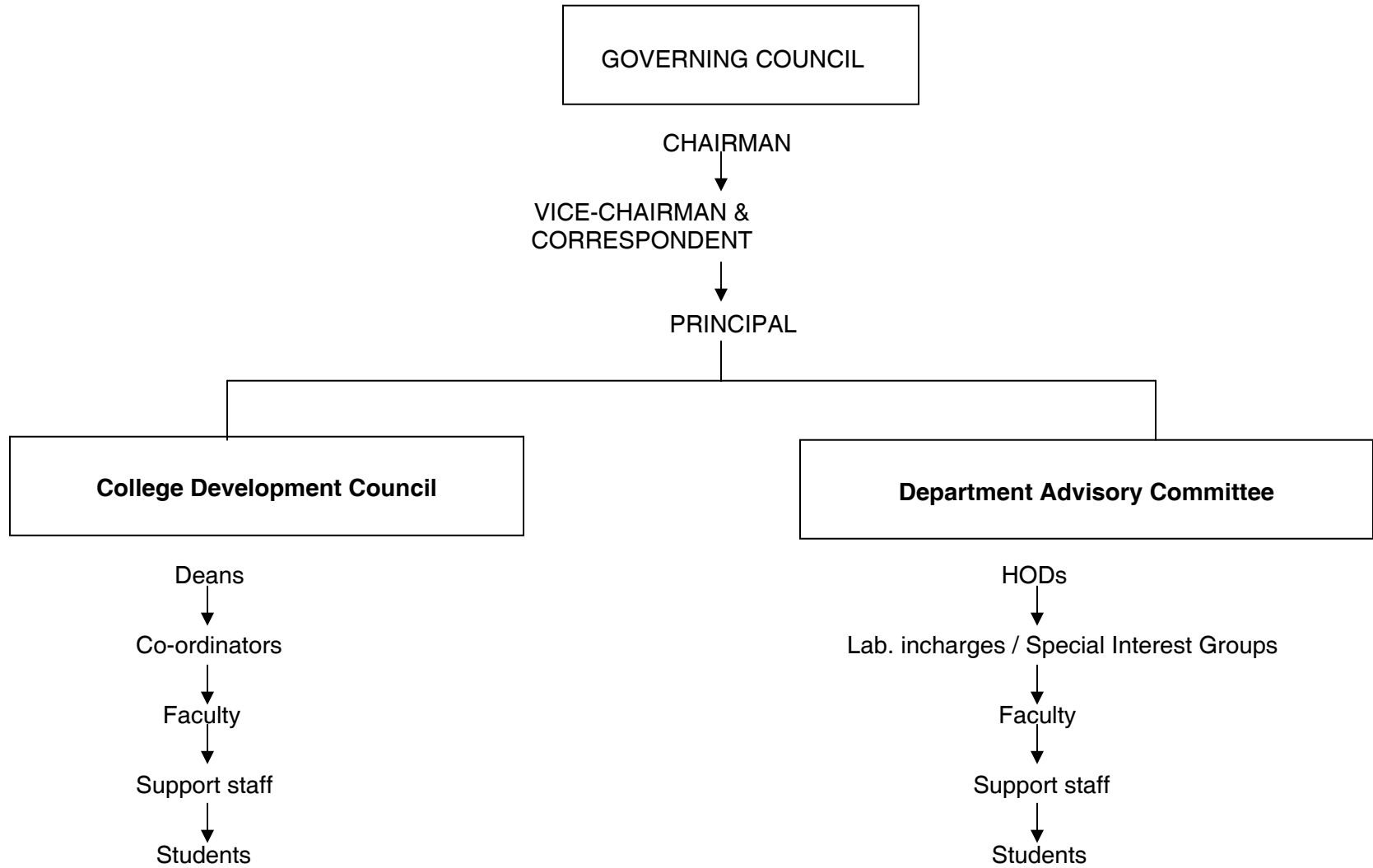
Frequency of meetings & date of : Annually **March 31, 2009 , 29<sup>th</sup> March 2010**

8. Academic Advisory Body

Frequency of meetings & date of Last meeting

**Academic Council : Twice in a year – 27<sup>th</sup> June 2009, 26<sup>th</sup> November 2009**

9. Organisational Chart



10. Student feedback mechanism on Institutional Governance / faculty Performance **Student feedback is being carried out online by all the students at the end of the semester**

11. Grievance redressal mechanism for faculty, staff and students **Appeals and Grievance Committee exists.**

12.

1. Name of the Department *	<b>Civil Engineering</b>		
a) Course	<b>B.E</b>		
Level	<b>UG / PG</b>		
1 <sup>st</sup> Year of approval by the Council	<b>1995</b>		
Year wise Sanctioned Intake	<b>(2009-10) 60</b>	<b>(2008-09)60</b>	<b>2007-08(60)</b>
Year wise Actual Admissions	<b>(2009-10) 60</b>	<b>(2008-09)60</b>	<b>2007-08(63)</b>
Cut off marks – General quota	<b>98.33</b>	<b>97.33</b>	<b>96.00</b>
% Students passed with Distinction	<b>2008-09(65.12%)</b>	<b>2007-08(55.56%)</b>	<b>2006-07(9%)</b>
% Students passed with First Class	<b>2008-09(27.91%)</b>	<b>2007-08(42.22%)</b>	<b>2006-07(54%)</b>
Students Placed	<b>2008-09(56)</b>	<b>2007-08(50)</b>	<b>2006-07(46)</b>
Average Pay package, Rs. / Year	<b>Rs.3 Lakhs</b>	<b>Rs.2.8 Lakhs</b>	<b>Rs.2.2 Lakhs</b>
Students opted for Higher Studies	<b>5</b>	<b>6</b>	<b>4</b>
Accreditation Status of the course	<b>Accredited / Provisionally Accredited / Not Accredited / Not eligible yet</b>		
b) Course	<b>M.E -Structural Engineering</b>		
Level	<b>UG / PG</b>		
1 <sup>st</sup> Year of approval by the Council	<b>1995</b>		
Year wise Sanctioned Intake	<b>(2009-10) 25</b>	<b>(2008-09) 25</b>	<b>(2007-08) 25</b>
Year wise Actual Admissions	<b>(2009-10) 24</b>	<b>(2008-09) 25</b>	<b>2007-08 (25)</b>
Cut off marks – General quota	<b>43.39</b>	<b>31.52</b>	<b>--</b>
% Students passed with Distinction	<b>2008-09(54.55%)</b>	<b>2007-08(87.05%)</b>	<b>2006-07(60%)</b>
% Students passed with First Class	<b>2008-09(45.45%)</b>	<b>2007-08(12.05%)</b>	<b>2006-07(40%)</b>
Students Placed	<b>2008-09()</b>	<b>2007-08()</b>	<b>2006-07()</b>
Average Pay package, Rs. / Year	<b>Rs. Lakhs</b>	<b>Rs. Lakhs</b>	<b>Rs. Lakhs</b>
Students opted for Higher Studies	<b>--</b>	<b>--</b>	<b>--</b>
Accreditation Status of the course	<b>Accredited / Provisionally Accredited / Not Accredited / Not eligible yet</b>		

c) Course	<b>M.Tech. Environmental Engineering</b>		
Level	<b>UG / PG</b>		
1 <sup>st</sup> Year of approval by the Council	<b>2007</b>		
Year wise Sanctioned Intake	<b>(2009-10) 18</b>	<b>(2008-09)18</b>	<b>2007-08(18)</b>
Year wise Actual Admissions	<b>(2009-10) 18</b>	<b>(2008-09) 00</b>	<b>2007-08(02)</b>
Cut off marks – General quota	<b>32.39</b>	<b>--</b>	<b>--</b>
% Students passed with Distinction	<b>2008-09(100%)</b>	<b>2007-08(--)</b>	<b>2006-07(--)</b>
% Students passed with First Class	<b>2008-09(0%)</b>	<b>2007-08(--)</b>	<b>2006-07(--)</b>
Students Placed	<b>2008-09(--)</b>	<b>2007-08(--)</b>	<b>2006-07(--)</b>
Average Pay package, Rs. / Year	<b>--</b>	<b>--</b>	<b>--</b>
Students opted for Higher Studies	<b>--</b>	<b>--</b>	<b>--</b>
Accreditation Status of the course	Accredited / Provisionally Accredited / Not Accredited / Not eligible yet		
Doctoral Courses	<b>Yes / No</b>		
Foreign Collaborations, if any			
Professional Society Memberships	<b>ACI, ISTE, IE,</b>		
Professional activities	<b>Yes</b>		
Consultancy Activities	<b>Yes</b>		
Grants fetched	<b>Rs. 80 Lakhs (Last three years)</b>		
Departmental Achievements	<b>DST supported FIST department</b>		
Distinguished Alumni	<b>Dr. Jayaraman, USA</b>		

II. Name of the Department *	<b>Mechanical Engineering</b>		
a) Course	<b>B.E</b>		
Level	<b>UG / PG</b>		
1 <sup>st</sup> Year of approval by the Council	<b>1995</b>		
Year wise Sanctioned Intake	<b>(2009-10) 120</b>	<b>(2008-09)120</b>	<b>(2007-08)120</b>
Year wise Actual Admissions	<b>(2009-10) 121</b>	<b>(2008-09)120</b>	<b>(2007-08) 120</b>
Cut off marks – General quota	<b>98.67</b>	<b>98.5</b>	<b>97.16</b>
% Students passed with Distinction	<b>2008-09(48.96%)</b>	<b>2007-08(35.29%)</b>	<b>2006-07(40%)</b>
% Students passed with First Class	<b>2008-09(41.67%)</b>	<b>2007-08(62.75%)</b>	<b>2006-07(55%)</b>
Students Placed	<b>2008-09(100)</b>	<b>2007-08(57)</b>	<b>2006-07(45)</b>
Average Pay package, Rs. / Year	<b>Rs.3 Lakhs</b>	<b>Rs.2.8 Lakhs</b>	<b>Rs.2.2 Lakhs</b>

Students opted for Higher Studies	<b>5</b>	<b>6</b>	<b>4</b>
Accreditation Status of the course	<b>Accredited</b> / Provisionally Accredited / Not Accredited / Not eligible yet		
b) Course	<b>M.E – Industrial Engineering</b>		
Level	<b>UG / PG</b>		
1 <sup>st</sup> Year of approval by the Council	<b>1987</b>		
Year wise Sanctioned Intake	<b>(2009-10) 18</b>	<b>(2008-09) 18</b>	<b>(2007-08) 18</b>
Year wise Actual Admissions	<b>(2009-10) 16</b>	<b>(2008-09) 10</b>	<b>(2007-08) 03</b>
Cut off marks – General quota	<b>40.15</b>	<b>27.90</b>	<b>--</b>
% Students passed with Distinction	<b>2008-09( 33.33%)</b>	<b>2007-08(63.64%)</b>	<b>2006-07(33%)</b>
% Students passed with First Class	<b>2008-09(66.67%)</b>	<b>2007-08(36.36%)</b>	<b>2006-07(67%)</b>
Students Placed	<b>2008-09(--)</b>	<b>2007-08(--)</b>	<b>2006-07(--)</b>
Average Pay package, Rs. / Year			
Students opted for Higher Studies	<b>--</b>	<b>--</b>	<b>--</b>
Accreditation Status of the course	Accredited / Provisionally Accredited / Not Accredited / Not eligible yet		
c) Course	<b>M.E – Production Engineering</b>		
Level	<b>UG / PG</b>		
1 <sup>st</sup> Year of approval by the Council	<b>1997</b>		
Year wise Sanctioned Intake	<b>(2009-10) 25</b>	<b>(2008-09)25</b>	<b>(2007-08) 25</b>
Year wise Actual Admissions	<b>(2009-10) 24</b>	<b>(2008-09)00</b>	<b>(2007-08) 02</b>
Cut off marks – General quota	<b>38.08</b>	<b>--</b>	<b>--</b>
% Students passed with Distinction	<b>2008-09(50%)</b>	<b>2007-08(53.85%)</b>	<b>2006-07(43%)</b>
% Students passed with First Class	<b>2008-09(50%)</b>	<b>2007-08(46.15%)</b>	<b>2006-07(57%)</b>
Students Placed	<b>2008-09(--)</b>	<b>2007-08(--)</b>	<b>2006-07(--)</b>
Average Pay package, Rs. / Year			
Students opted for Higher Studies			
Accreditation Status of the course	Accredited / Provisionally Accredited / Not Accredited / Not eligible yet		
Doctoral Courses	<b>Yes / No</b>		
Foreign Collaborations, if any	<b>AMADA</b>		
Professional Society Memberships	<b>ORSI, ISTE, IE</b>		
Professional activities	<b>Yes</b>		

Consultancy Activities	<b>Yes</b>		
Grants fetched	<b>Rs. 80 Lakhs (Last three years)</b>		
Departmental Achievements	<b>Industry Supported (TVS Motors) UG Course</b>		
Distinguished Alumni	<b>Padmashri Vedachalam</b>		
<b>III. Name of the Department *</b>	<b>Electrical and Elcetronics Engineering</b>		
a) Course	<b>B.E</b>		
Level	<b>UG / PG</b>		
1 <sup>st</sup> Year of approval by the Council	<b>1995</b>		
Year wise Sanctioned Intake	<b>(2009-10) 120</b>	<b>(2008-09)120</b>	<b>(2007-08)120</b>
Year wise Actual Admissions	<b>(2009-10) 121</b>	<b>(2008-09)123</b>	<b>(2007-08)131</b>
Cut off marks – General quota	<b>98.83</b>	<b>98.5</b>	<b>98.00</b>
% Students passed with Distinction	<b>2008-09(63.11 %)</b>	<b>2007-08(59.32%)</b>	<b>2006-07(50%)</b>
% Students passed with First Class	<b>2008-09(29.13%)</b>	<b>2007-08(30.51%)</b>	<b>2006-07(48%)</b>
Students Placed	<b>2008-09(109)</b>	<b>2007-08(67)</b>	<b>2006-07(44)</b>
Average Pay package, Rs. / Year	<b>Rs.3 Lakhs</b>	<b>Rs.2.8 Lakhs</b>	<b>Rs.2.2 Lakhs</b>
Students opted for Higher Studies	<b>5</b>	<b>6</b>	<b>4</b>
Accreditation Status of the course	<b>Accredited / Provisionally Accredited / Not Accredited / Not eligible yet</b>		
b) Course	<b>M.E – Power System Engineering</b>		
Level	<b>UG / PG</b>		
1 <sup>st</sup> Year of approval by the Council	<b>1995</b>		
Year wise Sanctioned Intake	<b>(2009-10) 25</b>	<b>(2008-09)25</b>	<b>(2007-08)25</b>
Year wise Actual Admissions	<b>(2009-10) 22</b>	<b>(2008-09) 21</b>	<b>(2007-08) 23</b>
Cut off marks – General quota	<b>41.91</b>	<b>35.17</b>	<b>--</b>
% Students passed with Distinction	<b>2008-09(61.90 %)</b>	<b>2007-08(60.87%)</b>	<b>2006-07(100%)</b>
% Students passed with First Class	<b>2008-09(38.10%)</b>	<b>2007-08(34.78%)</b>	<b>2006-07(0%)</b>
Students Placed	<b>2008-09(--)</b>	<b>2007-08(--)</b>	<b>2006-07(--)</b>
Average Pay package, Rs. / Year	<b>--</b>	<b>--</b>	<b>--</b>
Students opted for Higher Studies	<b>--</b>	<b>--</b>	<b>--</b>
Accreditation Status of the course	<b>Accredited / Provisionally Accredited / Not Accredited / Not eligible yet</b>		

c) Course	<b>M.Tech. – Control and Instrumentation Engineering</b>		
Level	<b>UG / PG</b>		
1 <sup>st</sup> Year of approval by the Council	<b>2007</b>		
Year wise Sanctioned Intake	<b>(2009-10) 18</b>	<b>(2008-09) 18</b>	<b>(2007-08) 18</b>
Year wise Actual Admissions	<b>(2009-10) 19</b>	<b>(2008-09) 14</b>	<b>(2007-08) 17</b>
Cut off marks – General quota	<b>41.41</b>	<b>35.17</b>	<b>--</b>
% Students passed with Distinction	<b>2008-09(47.06 %)</b>	<b>2007-08(--)</b>	<b>2006-07(--)</b>
% Students passed with First Class	<b>2008-09(52.94%)</b>	<b>2007-08(--)</b>	<b>2006-07(--)</b>
Students Placed	<b>2008-09(--)</b>	<b>2007-08(--)</b>	<b>2006-07(--)</b>
Average Pay package, Rs. / Year	<b>--</b>	<b>--</b>	<b>--</b>
Students opted for Higher Studies	<b>--</b>	<b>--</b>	<b>--</b>
Accreditation Status of the course	Accredited / Provisionally Accredited / Not Accredited / Not eligible yet		
Doctoral Courses	<b>Yes / No</b>		
Foreign Collaborations, if any			
Professional Society Memberships	<b>ISTE, IE,</b>		
Professional activities	<b>Yes</b>		
Consultancy Activities	<b>Yes</b>		
Grants fetched	<b>Rs. 80 Lakhs (Last three years)</b>		
Departmental Achievements	<b>DST supported FIST department</b>		
Distinguished Alumni	<b>Padmashri Sivathanupillai</b>		
IV. Name of the Department *	<b>Electronics and Communication Engineering</b>		
a) Course	<b>B.E</b>		
Level	<b>UG / PG</b>		
1 <sup>st</sup> Year of approval by the Council	<b>1995</b>		
Year wise Sanctioned Intake	<b>(2009-10) 120</b>	<b>(2008-09)120</b>	<b>(2007-08)120</b>
Year wise Actual Admissions	<b>(2009-10) 119</b>	<b>(2008-09)124</b>	<b>(2007-08)127</b>
Cut off marks – General quota	<b>99.17</b>	<b>99.33</b>	<b>98.83</b>
% Students passed with Distinction	<b>2008-09(63.39 %)</b>	<b>2007-08(56.76%)</b>	<b>2006-07(61%)</b>
% Students passed with First Class	<b>2008-09(31.25%)</b>	<b>2007-08(39.64%)</b>	<b>2006-07(38%)</b>
Students Placed	<b>2008-09(112)</b>	<b>2007-08(115)</b>	<b>2006-07(90)</b>

Average Pay package, Rs. / Year	<b>Rs.3 Lakhs</b>	<b>Rs.2.8 Lakhs</b>	<b>Rs.2.2 Lakhs</b>
Students opted for Higher Studies	<b>15</b>	<b>10</b>	<b>11</b>
Accreditation Status of the course	<b>Accredited</b> / Provisionally Accredited / Not Accredited / Not eligible yet		
b) Course	<b>M.E – Communication Systems</b>		
Level	<b>UG / PG</b>		
1 <sup>st</sup> Year of approval by the Council	<b>1995</b>		
Year wise Sanctioned Intake	<b>(2009-10) 25</b>	<b>(2008-09)25</b>	<b>(2007-08)25</b>
Year wise Actual Admissions	<b>(2009-10) 26</b>	<b>(2008-09) 23</b>	<b>(2007-08) 24</b>
Cut off marks – General quota	<b>45.05</b>	<b>36.78</b>	<b>--</b>
% Students passed with Distinction	<b>2008-09(54.17 %)</b>	<b>2007-08(60%)</b>	<b>2006-07(35%)</b>
% Students passed with First Class	<b>2008-09(45.83%)</b>	<b>2007-08(40%)</b>	<b>2006-07(65%)</b>
Students Placed	<b>2008-09(--)</b>	<b>2007-08(--)</b>	<b>2006-07(--)</b>
Average Pay package, Rs. / Year	<b>--</b>	<b>--</b>	<b>--</b>
Students opted for Higher Studies	<b>--</b>	<b>--</b>	<b>--</b>
Accreditation Status of the course	Accredited / Provisionally Accredited / Not Accredited / Not eligible yet		
c) Course	<b>M.E. – Wireless Technologies</b>		
Level	<b>UG / PG</b>		
1 <sup>st</sup> Year of approval by the Council	<b>2002</b>		
Year wise Sanctioned Intake	<b>(2009-10) 18</b>	<b>(2008-09) 18</b>	<b>(2007-08) 18</b>
Year wise Actual Admissions	<b>(2009-10) 19</b>	<b>(2008-09) 18</b>	<b>(2007-08) 19</b>
Cut off marks – General quota	<b>45.74</b>	<b>40.24</b>	<b>--</b>
% Students passed with Distinction	<b>2008-09(38.89 %)</b>	<b>2007-08(50%)</b>	<b>2006-07(67%)</b>
% Students passed with First Class	<b>2008-09(61.11%)</b>	<b>2007-08 (50%)</b>	<b>2006-07(28%)</b>
Students Placed	<b>2008-09(--)</b>	<b>2007-08(--)</b>	<b>2006-07(--)</b>
Average Pay package, Rs. / Year	<b>--</b>	<b>--</b>	<b>--</b>
Students opted for Higher Studies	<b>--</b>	<b>--</b>	<b>--</b>
Accreditation Status of the course	Accredited / Provisionally Accredited / Not Accredited / Not eligible yet		
Doctoral Courses	<b>Yes / No</b>		
Foreign Collaborations, if any	<b>Motorola, Agilent, Amada</b>		

Professional Society Memberships	<b>IEEE, ISTE, IETE</b>
Professional activities	<b>Yes</b>
Consultancy Activities	<b>Yes</b>
Grants fetched	<b>Rs. 80 Lakhs (Last three years)</b>
Departmental Achievements	<b>DST supported FIST department</b>
Distinguished Alumni	<b>Mr.Tilak, Motorola , Mr.S.Dhanabal, National Instruments</b>

V. Name of the Department *	<b>Computer Science and Engineering</b>		
a) Course	<b>B.E</b>		
Level	<b>UG / PG</b>		
1 <sup>st</sup> Year of approval by the Council	<b>1995</b>		
Year wise Sanctioned Intake	<b>(2009-10) 120</b>	<b>(2008-09)120</b>	<b>(2007-08)120</b>
Year wise Actual Admissions	<b>(2009-10) 124</b>	<b>(2008-09)125</b>	<b>(2007-08)130</b>
Cut off marks – General quota	<b>98.5</b>	<b>98.5</b>	<b>99.66</b>
% Students passed with Distinction	<b>2008-09(57.63 %)</b>	<b>2007-08(43.48%)</b>	<b>2006-07(53%)</b>
% Students passed with First Class	<b>2008-09(35.59%)</b>	<b>2007-08(45.22%)</b>	<b>2006-07(39%)</b>
Students Placed	<b>2008-09(116)</b>	<b>2007-08(115)</b>	<b>2006-07(90)</b>
Average Pay package, Rs. / Year	<b>Rs.3 Lakhs</b>	<b>Rs.2.8 Lakhs</b>	<b>Rs.2.2 Lakhs</b>
Students opted for Higher Studies	<b>12</b>	<b>14</b>	<b>10</b>
Accreditation Status of the course	<b>Accredited / Provisionally Accredited / Not Accredited / Not eligible yet</b>		
b) Course	<b>M.E – Computer Science &amp; Engineering</b>		
Level	<b>UG / PG</b>		
1 <sup>st</sup> Year of approval by the Council	<b>2001</b>		
Year wise Sanctioned Intake	<b>(2009-10) 25</b>	<b>(2008-09)25</b>	<b>(2007-08)25</b>
Year wise Actual Admissions	<b>(2009-10) 25</b>	<b>(2008-09) 23</b>	<b>(2007-08) 25</b>
Cut off marks – General quota	<b>47.08</b>	<b>36.90</b>	<b>--</b>
% Students passed with Distinction	<b>2008-09(80 %)</b>	<b>2007-08(61.54%)</b>	<b>2006-07(85%)</b>
% Students passed with First Class	<b>2008-09(20%)</b>	<b>2007-08(38.46%)</b>	<b>2006-07(15%)</b>
Students Placed	<b>2008-09(--)</b>	<b>2007-08(--)</b>	<b>2006-07(--)</b>
Average Pay package, Rs. / Year	<b>--</b>	<b>--</b>	<b>--</b>
Students opted for Higher Studies	<b>--</b>	<b>--</b>	<b>--</b>
Accreditation Status of the course	<b>Accredited / Provisionally Accredited / Not Accredited / Not eligible yet</b>		

Doctoral Courses	<b>Yes / No</b>		
Foreign Collaborations, if any	Yahoo!		
Professional Society Memberships	<b>CSI, ISTE, IE,</b>		
Professional activities	<b>Yes</b>		
Consultancy Activities	<b>Yes</b>		
Grants fetched	<b>Rs. 80 Lakhs (Last three years)</b>		
Departmental Achievements	<b>DST supported FIST department</b>		
Distinguished Alumni	<b>Prof. Gopi Meeenkashi Sundaram, Univ. of California, Irvine</b>		
VI. Name of the Department *	<b>Information Technology</b>		
Course	<b>B.Tech.</b>		
Level	<b>UG / PG</b>		
1 <sup>st</sup> Year of approval by the Council	<b>1999</b>		
Year wise Sanctioned Intake	<b>(2009-10) 120</b>	<b>(2008-09)120</b>	<b>(2007-08)120</b>
Year wise Actual Admissions	<b>(2009-10) 120</b>	<b>(2008-09)120</b>	<b>(2007-08)120</b>
Cut off marks – General quota	<b>98.00</b>	<b>97.5</b>	<b>98.16</b>
% Students passed with Distinction	<b>2008-09(52.04 %)</b>	<b>2007-08(38.30%)</b>	<b>2006-07(23%)</b>
% Students passed with First Class	<b>2008-09(35.59%)</b>	<b>2007-08(59.57%)</b>	<b>2006-07(66%)</b>
Students Placed	<b>2008-09(99)</b>	<b>2007-08(100)</b>	<b>2006-07(74)</b>
Average Pay package, Rs. / Year	<b>Rs.3 Lakhs</b>	<b>Rs.2.8 Lakhs</b>	<b>Rs.2.2 Lakhs</b>
Students opted for Higher Studies	<b>14</b>	<b>5</b>	<b>3</b>
Accreditation Status of the course	<b>Accredited / Provisionally Accredited / Not Accredited / Not eligible yet</b>		
Doctoral Courses	<b>Yes / No</b>		
Foreign Collaborations, if any	EMC <sup>2</sup>		
Professional Society Memberships	<b>CSI, ISTE, IE,</b>		
Professional activities	<b>Yes</b>		
Consultancy Activities	<b>Yes</b>		
Grants fetched	<b>Rs. 20 Lakhs (Last three years)</b>		
Departmental Achievements	<b>Accredited in the year 2006</b>		
Distinguished Alumni	<b>Mrs. Malathi, HP</b>		

VII.	Name of the Department *	<b>Architecture</b>		
	Course	<b>B.Arch.</b>		
	Level	<b>UG / PG</b>		
	1 <sup>st</sup> Year of approval by the Council	<b>1995</b>		
	Year wise Sanctioned Intake	<b>(2009-10) 40</b>	<b>(2008-09) 40</b>	<b>(2007-08) 40</b>
	Year wise Actual Admissions	<b>(2009-10) 40</b>	<b>(2008-09) 40</b>	<b>(2007-08) 40</b>
	Cut off marks – General quota	<b>55.00</b>	<b>51.50</b>	<b>52.50</b>
	% Students passed with Distinction	<b>2008-09(10.71 %)</b>	<b>2007-08(06.06%)</b>	<b>2006-07(0%)</b>
	% Students passed with First Class	<b>2008-09(78.57%)</b>	<b>2007-08(72.73%)</b>	<b>2006-07(97%)</b>
	Students Placed	<b>2008-09(-)</b>	<b>2007-08(-)</b>	<b>2006-07(-)</b>
	Average Pay package, Rs. / Year	<b>--</b>	<b>--</b>	<b>--</b>
	Students opted for Higher Studies	<b>5</b>	<b>6</b>	<b>4</b>
	Accreditation Status of the course	Accredited / Provisionally Accredited / Not Accredited / Not eligible yet		
	Doctoral Courses	<b>Yes / No</b>		
	Foreign Collaborations, if any	<b>--</b>		
	Professional Society Memberships	<b>COA, ISTE</b>		
	Professional activities	<b>Yes</b>		
	Consultancy Activities	<b>Yes</b>		
	Grants fetched	<b>Rs. 25 Lakhs (Last three years)</b>		
	Departmental Achievements	<b>Louis Khan Trophy</b>		
	Distinguished Alumni	<b>Ar.Koushik, Leed Manager, Singapore</b>		

VIII.	Name of the Department *	<b>Computer Applications</b>		
	Course	<b>M.C.A</b>		
	Level	<b>UG / PG</b>		
	1 <sup>st</sup> Year of approval by the Council	<b>1995</b>		
	Year wise Sanctioned Intake	<b>(2009-10) 60</b>	<b>(2008-09) 60</b>	<b>(2007-08) 60</b>
	Year wise Actual Admissions	<b>(2009-10) 60</b>	<b>(2008-09) 60</b>	<b>(2007-08) 60</b>
	Cut off marks – General quota	<b>37.50</b>	<b>37.50</b>	<b>44.00</b>
	% Students passed with Distinction	<b>2008-09(70 %)</b>	<b>2007-08(47.46%)</b>	<b>2006-07(39%)</b>
	% Students passed with First Class	<b>2008-09(26.67%)</b>	<b>2007-08(49.15%)</b>	<b>2006-07(61%)</b>
	Students Placed	<b>2008-09(50)</b>	<b>2007-08(50)</b>	<b>2006-07(39)</b>

Average Pay package, Rs. / Year	<b>Rs.3 Lakhs</b>	<b>Rs.2.8 Lakhs</b>	<b>Rs.2.2 Lakhs</b>
Students opted for Higher Studies	--	--	--
Accreditation Status of the course	Accredited / Provisionally Accredited / Not Accredited / Not eligible yet		
Doctoral Courses	<b>Yes / No</b>		
Foreign Collaborations, if any			
Professional Society Memberships	<b>ISTE, CSI</b>		
Professional activities	<b>Yes</b>		
Consultancy Activities	<b>Yes</b>		
Grants fetched	<b>Rs. 15 Lakhs (Last three years)</b>		
Departmental Achievements	<b>Earliest Accreditation</b>		
Distinguished Alumni	<b>Mr.N.Ramkumar</b>		
13. Name of Teaching Staff *			
Designation	<b>All the teaching staff details are enclosed.</b>		
Department			
Date of joining the Institution			
Qualifications with Class / Grade	UG	PG	PhD
Total Experience in Years	Teaching	Industry	Research
Papers Published	National		International
Papers Presented in Conferences	National		International
Ph.D. Guide? Give field & University	Field	University	
PhDs / Projects Guided	PhDs	Projects at Masters level	
Books Published / IPRs / Patents			
Professional Memberships			
Consultancy Activities			
Awards			
Grants fetched			
Interaction with Professional Institutions			

14.	Admission quota # Entrance test / admission criteria	<b>Single window counseling system as per Govt. of TamilNadu</b>			
	Cut off / last candidate admitted	<b>98.33/100 (Max.) 96.8/100 (Min.)</b>			
	Fees in rupees	<b>Rs. 16,400</b>	<b>Rs. 16,400</b>	<b>Rs. 16,400</b>	
	Number of Fee Waivers offered	CAY	CAY-1	CAY-2	
	Admission Calendar	<b>Yes</b>			
	PIO quota	<b>Yes / No</b>			
15.	Infrastructural information*				
	Classroom / Tutorial Room facilities	<b>65</b>		Photo	
	Laboratory details	<b>49</b>		Photo	
	Computer Centre facilities	<b>Central Computing Centre (110 systems)</b>		Photo	
	Library facilities	<b>e-journals, e-learning contents, Text and reference books, Magazines, Back Volumes,</b>			
	Auditorium / Seminar Halls / Amphi	<b>Seminar Halls – 07 ; Auditoriums -02; Amphi -02</b>			
	Cafeteria	<b>Yes Available at two locations inside the campus</b>		Photo	
	Indoor Sports facilities	<b>Yes available</b>		Photo	
	Outdoor Sports facilities	<b>Yes Available</b>		Photo	
	Gymnasium facilities	<b>Yes Available</b>		Photo	
	Faculties for disabled	<b>Yet to be established</b>		Photo	
	Any other facilities	<b>Bank, Post Office, Student Co-op Stores, Reprography</b>			Photo
16.	Boys Hostel	<b>Rooms : 281</b>	<b># of inmates : 1125</b>	Photo	
	Girls Hostel	<b>Rooms : 167</b>	<b># of inmates : 693</b>	Photo	
	Medical & other Facilities at Hostel	<b>Dispensary is available</b>		Photo	
17.	Academic Sessions	<b>Semester System</b>			
	Examination system, Year / Sem	<b>Semester</b>			
	Period of declaration of results	<b>Every Semester</b>			
18.	Counseling / Mentoring	<b>Tutor System is being followed with a tutor for every 25 students.</b>			
	Career Counseling	<b>Career Guidance cell and Training and Placement Cells are available</b>			
	Medical facilities	<b>Yes</b>			
	Student Insurance	<b>Yes</b>			

19. Students Activity Body                      **Department Associations exist**
- Cultural activities                                **Yes. More than ten cultural clubs are available**
- Sports activities                                 **Indoor and Outdoor games are available**
- Literary activities                                **Yes . Literary club is available**
- Magazine / Newsletter                         **Every department publishes department newsletter in every semester. Online and Physical newsletters are published through Papyrus clubs.**
- Technical activities / TechFest                **Annual technical symposium “TecUthsav “ being organized every year.**
- Industrial Visits / Tours                         **Department organizes industrial visit every semester**
- Alumni activities                                 **Silver Jubilee Alumni meet, Personality Development Camps, Chapter Meetings, Alumni induction, Mentor Programme etc.**
20. Name of the Information Officer for RTI
- Designation
- Phone number with STD code
- FAX number with STD code                    **Matter is subjudiced.**
- Email